

TOGETHER WE LEARN ABOUT ARTIFICIAL INTELLIGENCE

SHARED UNDERSTANDING

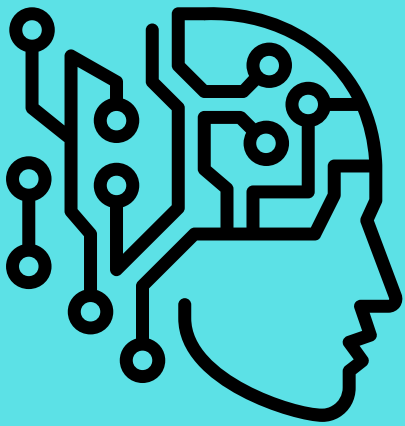


Communication with educational partners regarding the potential impact of Generative Artificial Intelligence on the education environment requires a shared common understanding of key concepts and technical language.

What is the Artificial Intelligence Revolution?

WHAT IS ARTIFICIAL INTELLIGENCE?

AI is a branch of computer science that aims to create complex systems that perform tasks that mimic human intelligence.



Such tasks include learning from experiences, reasoning, problem-solving, perception, and understanding spoken language.

WHAT IS GENERATIVE AI?

GenAI represents a significant advancement in technology specialized to create new, innovative, and creative content that may not have existed previously. Gen AI tools are capable of generating personalized content that aligns with a user's specific instructions or prompts.



TYPES OF ARTIFICIAL INTELLIGENCE?

REACTIVE

Responds to specific inputs or situations without learning from past experiences (Roomba, Siri, Alexa, Google Assistant)

PREDICTIVE

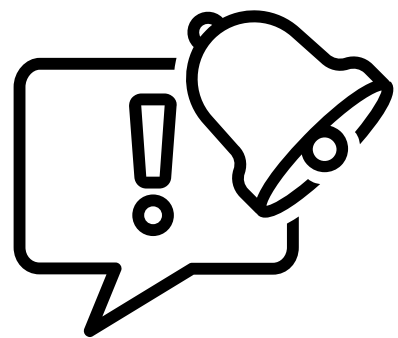
Analyzes historical data and experiences to predict future events or behaviours (Netflix, Grammarly, Google Maps, Amazon)

GENERATIVE

Generates new content or outputs, often creating something novel from learned patterns (ChatGPT, Copilot, Gemini, Perplexity)

WHY IS THIS IMPORTANT?

The rapid advancement and integration of GenAI tools in society is quickly changing how we use technology in our daily lives.



The role of the education system is to prepare learners for the future, to provide them with opportunities to develop the skills needed to thrive in the world. In a world with GenAI, learners must develop the mindset and literacy skills to be able to think critically about and to safely utilize this technology.

