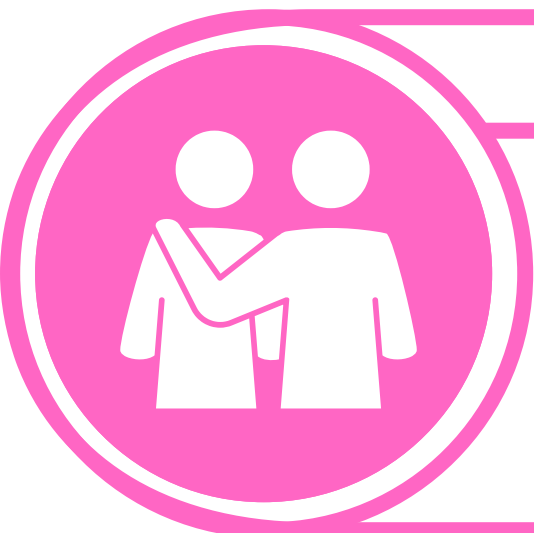


TOGETHER WE LEARN TO BE EMPATHETIC IN OUR USE OF GEN AI



EMPATHY

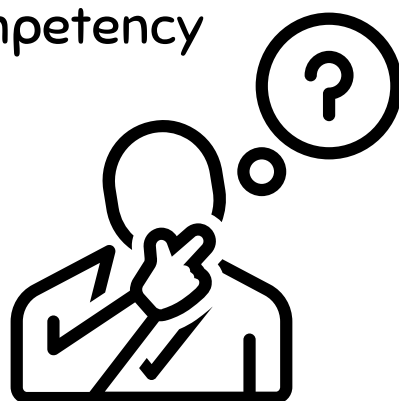
GenAI use should enhance learning and reduce barriers. By embracing a learning culture of empathy, we will promote understanding, encourage compassion, enhance communication, support inclusive learning environments, foster connections and build relationships.

How can we use GenAI tools to support and build relationships in our schools?

FOCUS ON PROCESS OVER PRODUCTS

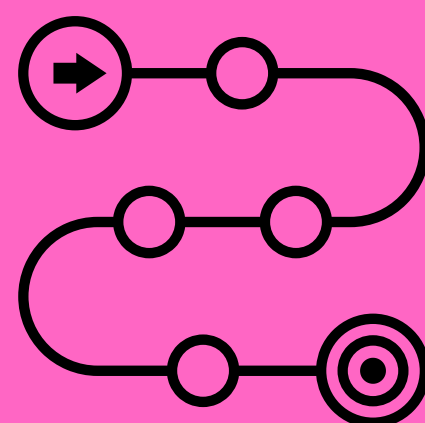
GenAI tools have the potential to disrupt traditional approaches to learning.

As students gain access to GenAI tools, educators must develop strategies that ensure the learning process remains authentic, meaningful, and competency focused.

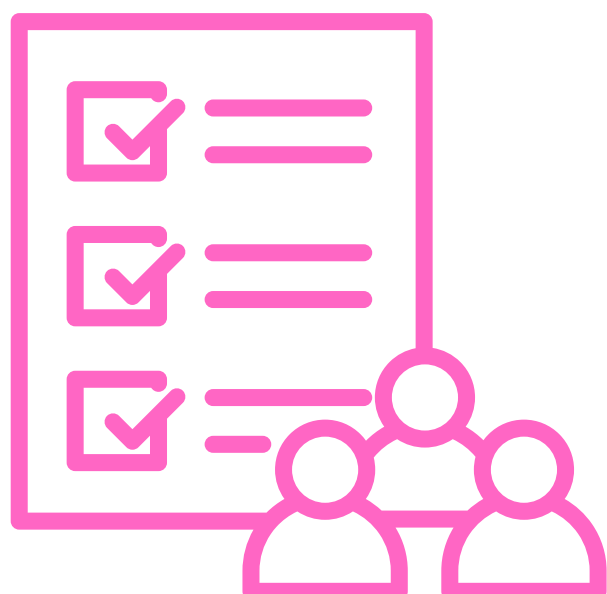


CO-CONSTRUCT EXPECTATIONS

Together, educators and students should co-construct clear expectations and guidelines about when GenAI tools should and should not be used.



TRIANGULATE ASSESSMENT



Educators may seek to use GenAI tools to streamline the assessment process and save time, but should always confirm the accuracy of assessment data by triangulating evidence of students learning.

It is crucial that GenAI tools do not replace the professional judgement of educators as these tools are unreliable for the assessment and evaluation of student learning.

